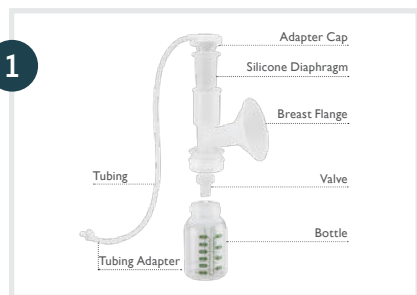


# Amēda® Elite™ Breast Pump Quick Start Guide

## GETTING STARTED before beginning, wash hands



- If sterile, use immediately (kit is preassembled)
- If not sterile, clean and assemble the kit (refer back page of this Quick Card Guide).



- Insert tubing adapter into pump piston.



- Center flange on breast to create seal.
- Refer to back page of this Quick Card Guide for proper flange fit.



- To turn on, turn VACUUM dial to right to highest comfortable setting.
- Try half-way, adjust as needed.



- Turn CYCLES dial to right to MAX.



- Once milk flows, turn CYCLES dial to left to help drain milk.
- Try half-way, adjust as needed.



- If milk flow slows, try for another let-down.
- Turn CYCLES to MAX, then turn to left to slow speed when milk is flowing.
- Repeat as needed.



- To turn off, turn VACUUM dial to left.

## Cleaning the Ameda Elite Breast Pump

### For At-Home/End Users:

After each pumping, turn pump OFF.  
Wipe with clean, damp cloth.

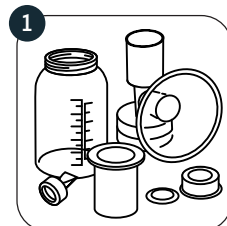
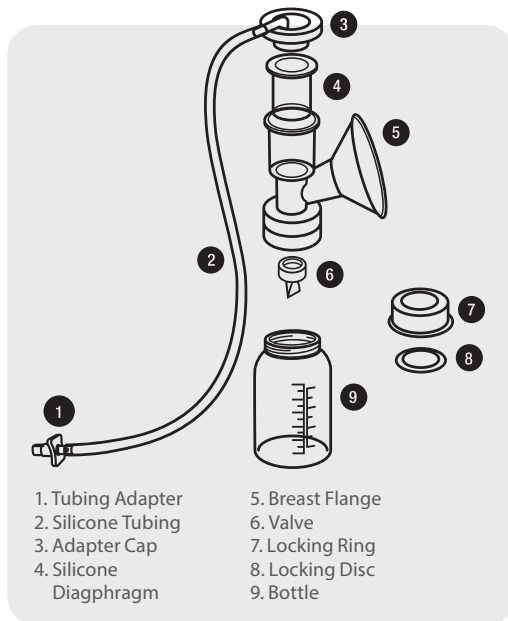
### For Hospital/Rental Stations:

Turn pump OFF, Clean between users, wearing disposable gloves. Use only Ameda approved cleaners such as Metrex CaviWipes or PDI Sani-Cloth AF3

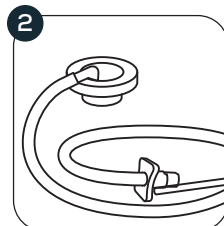
**IMPORTANT:** Only use an Ameda HygeniKit Milk Collection Kit. Consult your healthcare provider on pumping session time.

Ameda's HygieniKit Milk Collection System features the world's only FDA-cleared viral barrier that helps protect breastmilk, pump and the tubing from potential infections from contaminants like viruses, bacteria and mold.

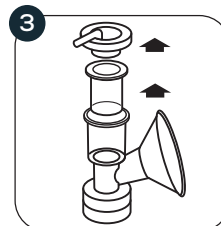
## Cleaning the Ameda HygieniKit Milk Collection Kit



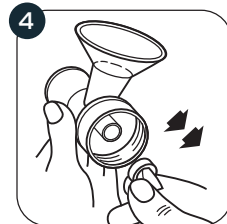
1 Wash before use if kit is unsterile and after each use.



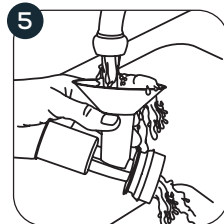
2 \*Important Do Not Wash (1) Tubing Adapter, (2) Silicone Tubing, and (3) Adapter Cap.



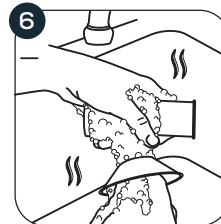
3 Disassemble parts.



4 Grasp valve by thick sides.



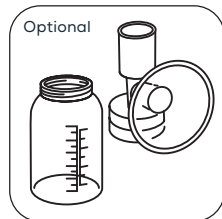
5 Rinse with cool, clean water.



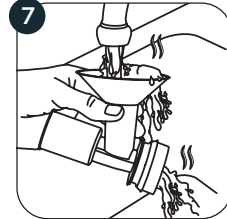
6 Wash the parts with warm soapy water under running water. Do not immerse parts in sink. Do not insert anything into valves while cleaning.



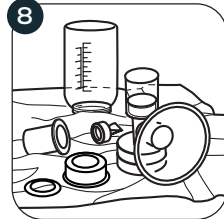
Optional  
Boil to sanitize



Optional  
Wash larger pieces in upper rack of dishwasher.



7 Rinse with warm, clean water.



8 Air Dry.

\*Important Do Not Wash

1. Tubing Adapter
2. Silicone Tubing
3. Adapter Cap

These parts Do Not need to be washed before first use or after each use - milk does not come into contact with these parts while pumping.

If using steam sanitizing process, please follow cleaning instructions first.

If using a brush, check pump kit parts for cracks, chips, tears or deformation before and after brush use.

 Consult Instructions For Use  
Ameda Elite and HygieniKit/Manual Pump

Ameda, Elite, HygieniKit and associated logos are trademarks of Ameda, Inc. Any other trademarks brand or images appearing herein are property of their respective owners and are used herein with expressed or implied permission.  
26601058 - 0420



### Find your Best Fit

A good breast flange fit ensures a perfect seal which enhances your comfort and pumping efficiency. Ameda's CustomFit Flange System makes finding the right fit easy.

### Good Fit

During pumping, your nipple moves freely in the breast flange tunnel. You see space around the nipple. Not much areola is drawn into the tunnel with the nipple.



### Too Small

During pumping, some or all of your nipple rubs against the sides of the breast flange tunnel.



### Too Large

During pumping, more areola is drawn into the breast flange with your nipple. Your areola may rub against the side of the breast flange tunnel.

