

Athena 2.0

Device 2.0 for a safe incoming and transport



CHAIR

Frequent usage

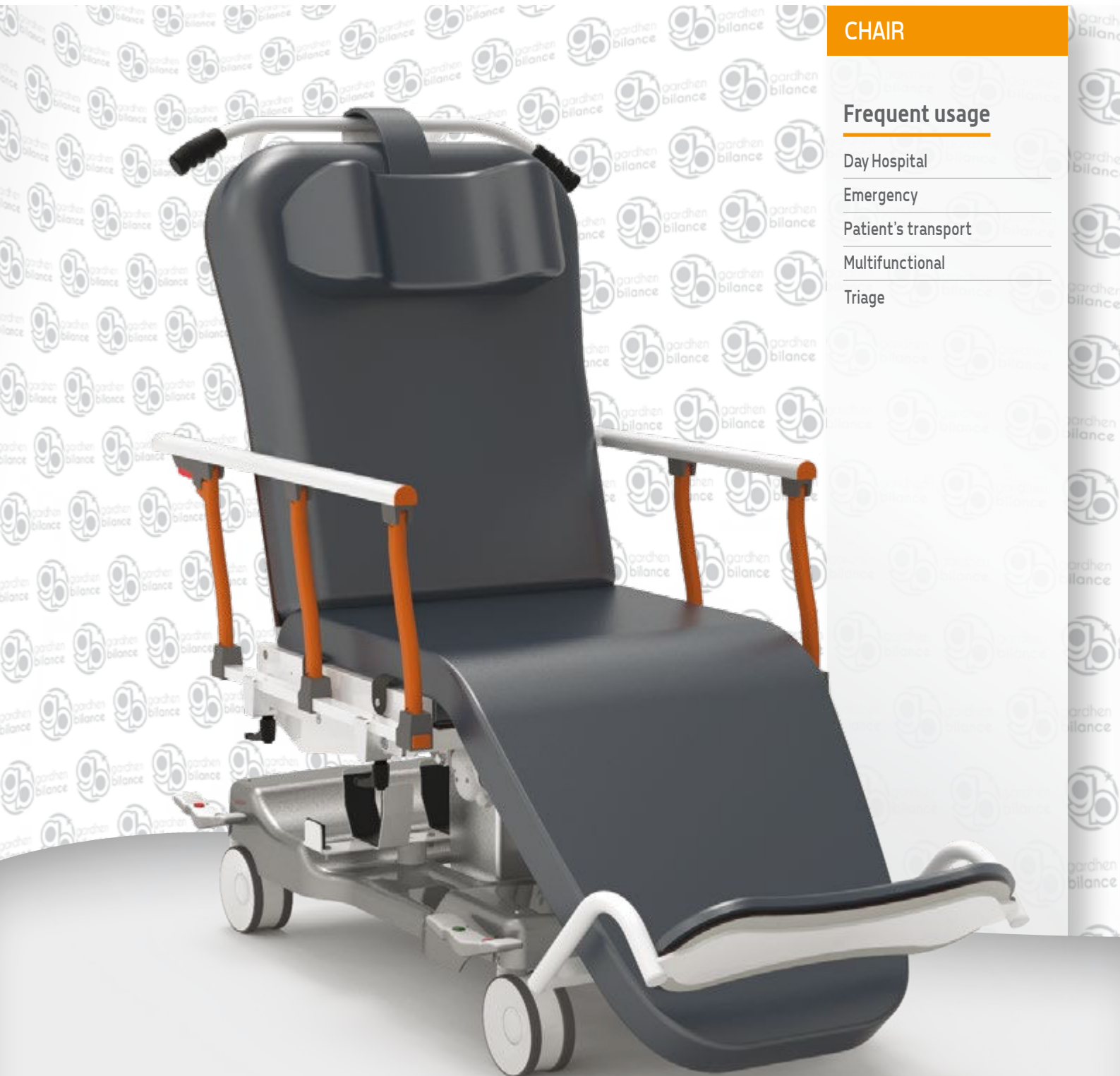
Day Hospital

Emergency

Patient's transport

Multifunctional

Triage





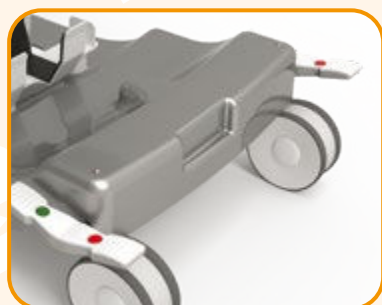
MOTORIZED HEIGHT ADJUSTABLE



N°2 4,5 A BATTERIES WITH CHARGER INCLUDED (EQUIPMENT CODE AC17P/A)



HANDLE WITH ERGONOMIC GRIP



CENTRALIZED BRAKE WITH DIRECTIONAL SYSTEM

The stretcher changes its look



ATHENA 2.0 is a combination of passion, elegance and a lot of experience. The study for the details and the technological research are evident, however the real difference is provided by its practical functional solutions. Suitable to accommodate patient's of every size, it ensures positive feeling and incomparable relaxation. It helps to perform all therapeutic treatments in a perfect postural conditions.

The advantageous comfort of an armchair, as comfortable as a bed and as functional as a stretcher. Suitable for any clinical situation, it favours unique postural conditions allowing to accomodate patients of different sizes. The project represents an innovative furnishing solution, reduces the patient's psychological discomfort without sacrificing the performance of the classic stretcher.

Benefits

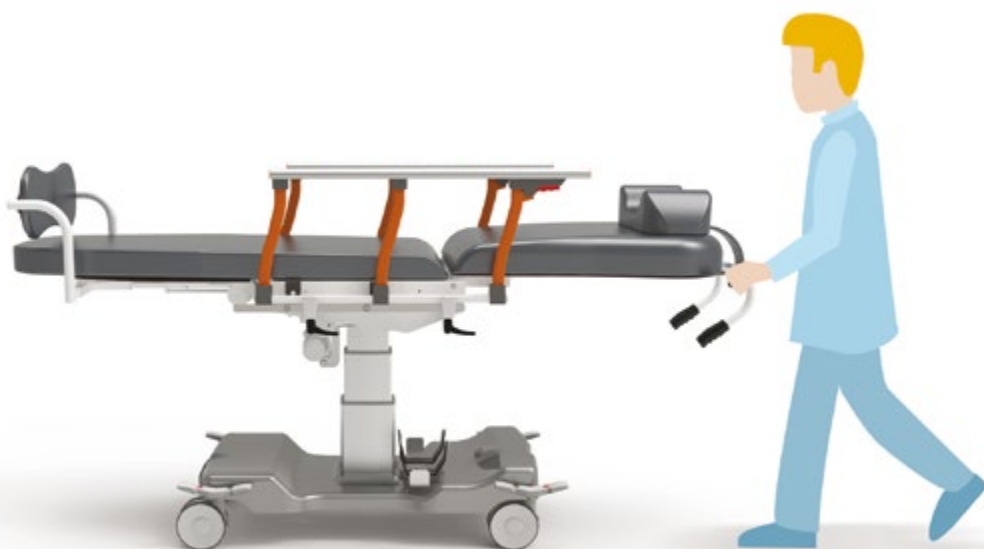


Made with a very sturdy frame, that grants a high shock tolerance and long life to the device.

- Lightweight, stable and easy to move.
- Anti-tilt frame, it prevents any tilt in every operative conditions.
- Frame painted with epoxy paints enriched with antibacterial. Available in a wide range of colours.
- An exceptional maneuverability is granted by n°4 twin wheels 150 mm (it is also possible to install a fifth directional wheel as optional in order to ensure the proper maneuverability even with full load in environment with reduced space).
- Double handles with ergonomic and non-slippery grip. It is very useful even when the backrest is lowered.
- Low voltage power through batteries without any limit of autonomy.
- Non-deformable frame prevents any tilt.
- Centralized braking system.
- Low voltage motors for device's adjustment activated via handset. The handset can be inhibited and can be easily reached by the patient.
- The articulated and motorized sections allow to perform passive postural gymnastics with a soothing effect to prevent secondary pressure injuries due to inertia.
- Stretcher's movement can be activated through handset. Any manual operations are not required to be performed by the medical staff in order to prevent any musculoskeletal injuries.
- Trendelenburg position can be reached through a single button along with other pre-setted positions.
- Patient's surface in HPL without sharp edges; sanitizable and easy to clean.
- The seat width can be extended on both sides in order to perform procedures in lateral decubitus position (optional).
- The upholstery is allowing a thorough and effective sanitization reducing the risks of cross infections. A wide range of colours is available.
- Upholstery's features: antibacterial, flame retardant class 1IM, antimycotic, ecologic, latex free, phtalate free and resistant.
- Available with a wide range of functional and exclusive accessories (see accessories catalogue).
- Lightweight, adjustable, foldable and easily removable side rails on DIN bar (also with armrests and other interchangeable protections).
- Max load capacity 200kg (standard version), available even with a max load capacity of 300kg (bariatric version).

Standard features

- Painted steel frame in thermosetting powder.
- Foldable side rails couple - Equipment code AC132.
- N°4 twin wheels 150 mm - Equipment code AC5P/1.
- Centralized braking system activated through bilateral pedals with directional system - Equipment code AC7P2G.
- Bilateral front/rear pedal brake - Equipment code AC7P3.
- Electrically driven movements through handset:
 - Motorized height adjustable 300 mm - Equipment code AC28/200.
 - Backrest.
 - Leg section - Equipment code AC12.
 - Trendelenburg.
 - Motorized seat 0°/-15° - Equipment code AC35/1.
 - Legrest - Equipment code AC13/SH1.
- Oxygen tank holder - Equipment code AC95P.
- Double handle with ergonomic grip - Equipment code AC117.
- 13 buttons handset to achieve all the available movement, it features an inhibition key and pre-setted position (equipment code AC6MP). Chair's movements are controlled by a 10 buttons handset with a 3,5mtl coiled cable; For patient's safety purpose the handset is provided with an inhibition key, Equipment code AC34P. The handset is user friendly and has visual pictograms useful for partially sighted people. Insulation IP66.
- Bilateral handset support - Equipment code AC25P.
- Powered through 4,5 Ah interchangeable batteries (n°2 as standard equipment) with relating charger - Equipment code AC17P/A.
- Supplementary headrest pillow - Equipment code AC27.
- Easily removable seat/leg soft foam cushions.
- Soft and removable coating for the footrest - Equipment code AC16/1.
- ABS base cover - Equipment code AC83.
- Cushions made in soft foam height 100 mm.
- Upholstery: with anti-bacterial properties, flame retardant class 11M, antimicrobial, ecologic, latex free, phthalate free. Resistant to: alcohol, sodium hypochlorite max 5%, a wide range of common used detergent, liquid and other biological fluids. - Equipment code AC87/1.



13 BUTTONS HANDSET WITH MEMORY FUNCTION

Chair's movements are controlled by a 10 buttons handset with a 3,5mtl coiled cable; For patient's safety purpose the handset is provided with an inhibition key, equipment code AC34P. The handset is user friendly and has visual pictograms useful for partially sighted people. Insulation IP66.



MOTORIZED FOOTREST

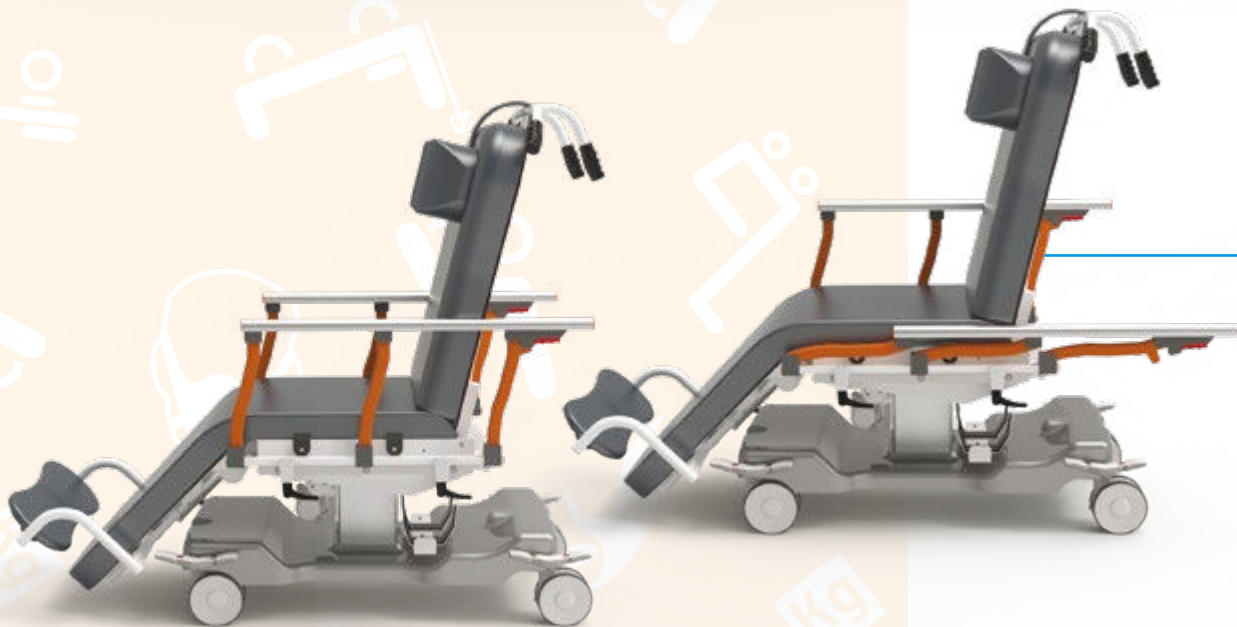


OXYGEN TANK HOLDER

Movements



TRENDELENBURG



EASY FOLDABLE
SIDE RAILS



EASILY REMOVABLE SIDE RAILS

Recommended accessories



AC109



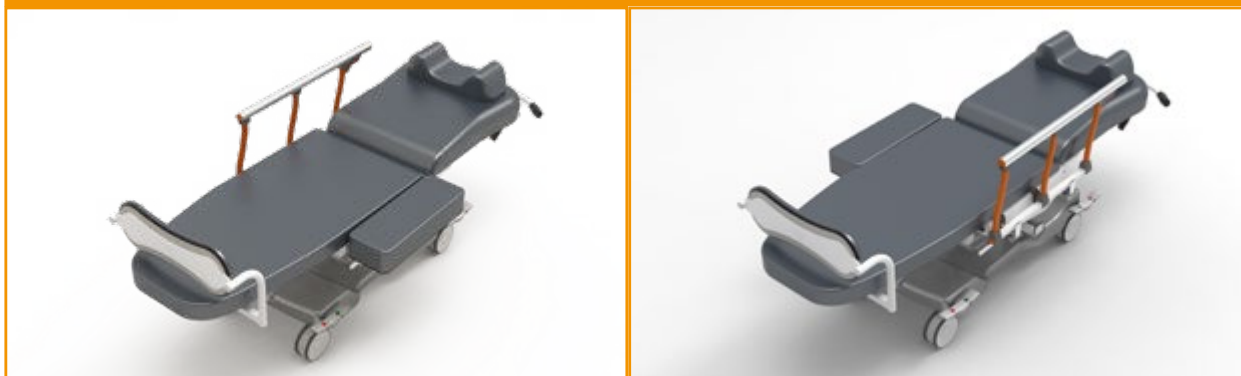
HPL foldable side rails on DIN bar

AC109/1



HPL revolvable side rails on DIN bar with integrated armrest

AC133



20 cm seat width extension on DIN bar

Recommended accessories

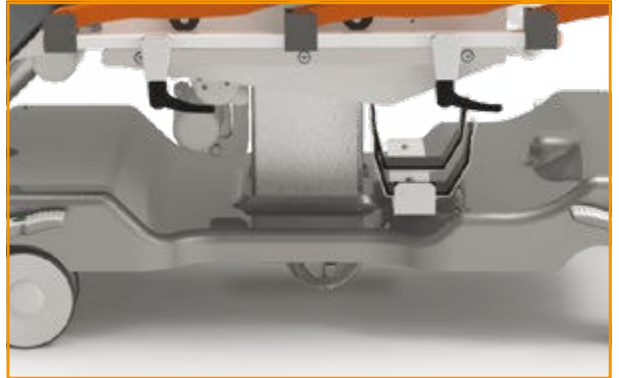


AC118



Directional fifth wheel activated through pedal

AC129



Swivable and auto-levelling amortized fifth wheel

AC144



Multifunctional armrest on DIN bar

AC4P/3



IV pole in steel on DIN bar

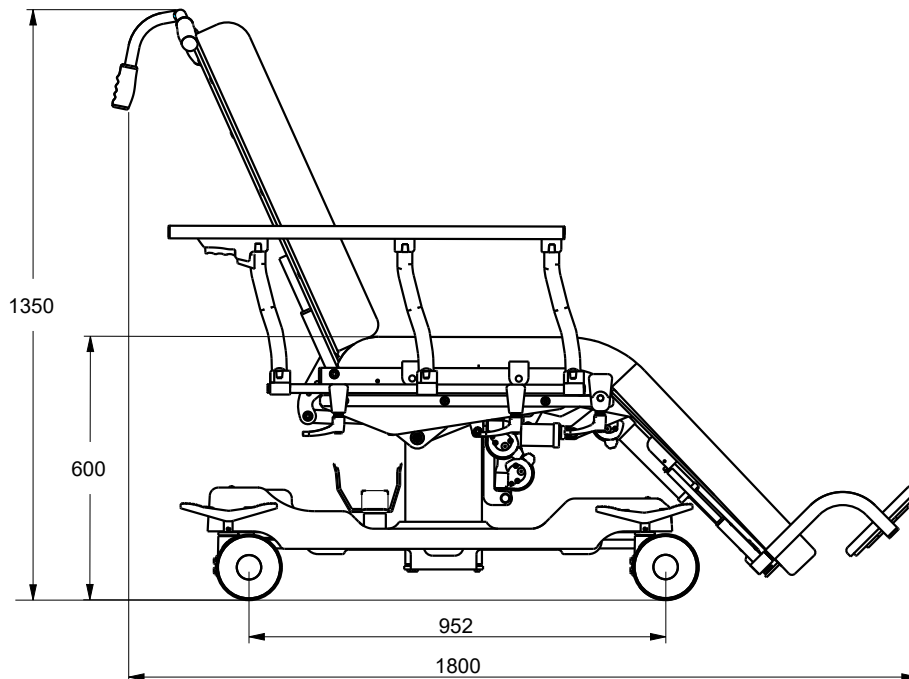
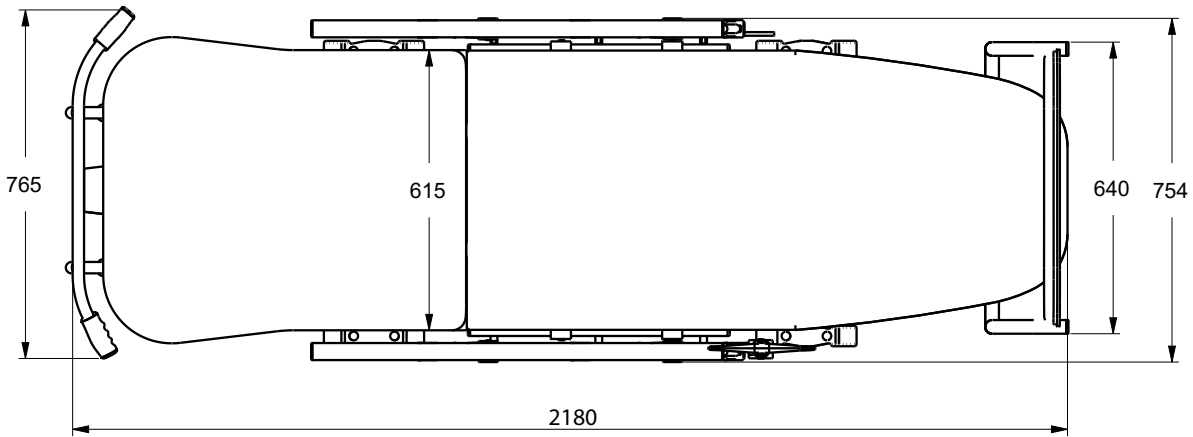
AC145



Universal DIN clamp for accessories



Dimensions



Would you like to customize upholstery or frame?

Scan or click the QR code and discover how to customize the device consulting our colour chart.



MAIN CORD



Type F - Schuko



Type L - 16A



Type I - Australia

Type B - Canada
and USA

Type G - UK plug

Technical sheet



GMDN Code	38447
ID Code	GB0228.SP Painted steel
Inteded use	Multifunctional chair
Manufacturer	GARDHEN BILANCE SRL
Overall weight	80 kg
Wheels	No.4 Ø 100mm swivable and stainless with braking system
Backrest angle	0-80° approx.
Leg angle	0-45° approx.
Seat angle	0-15° approx.
Power	100 - 240 Vac 50/60 Hz
Electric motors	Low voltage 24 (Volt)
Max electrical input	4A
Insulation	IP44
Max load	Standard 200 kg / Bariatric 300 kg
Safety working load	Standard 235 kg / Bariatric 335 kg

OFFICIAL DISTRIBUTOR IN AUSTRALIA:

Unit 4/62 Borthwick Ave,
Murarrie QLD 4172 (Australia)Tel: 1300.643.633
sales@midmed.com.au
www.midmed.com.au

For certifications please refer to "Certifications and Quality system" section

Pictures contained in this brochure is for illustrative purpose only. The manufacturer reserves the right to modify the projects without notice. For accessories identification please refer to the accessory catalogue or commercial offer. When data are different please refer to commercial offer.

Dep. EN_119 rev. 06/12/2021

