

# Freddy Therapy

Compact size, able to adapt to all situations



## THERAPY CART

- Frequent usage**
- Emergency room
  - Ambulatory
  - ICU
  - Dialysis
  - Hospitalization ward
  - Specialistic





DRAWERS IN STEEL SHEETS, SLIDING ON GLIDES WITH SOFT CLOSE LOCKING SYSTEM

## Benefits



- Sturdy and with sheets in stainless steel painted with thermosetting paint.
- Accessories in stainless material.
- Single body structure and self-supporting.
- Thanks to its small size it is easy to handle even in narrow places.
- Despite its small size it is actually very capacious.
- Swivable wheels with sliding system for easy driving.
- The cart is upgradable with a wide range of accessories that can be placed on the DIN bars located on 3 sides.
- Push and pull extra tray.
- User friendly:
  - 3 different drawers configuration;
  - available up to 7 drawers;
  - the accessories can be changed or removed without any tools.
- Anti-tilting structure.
- Table top made in plastic material without sharp edges for easy cleaning and disinfection.
- Drawers in steel sheets, sliding on glides with soft close locking system
- Drawers centralized locking system.
- Glides can support up to 30 kg.

## Standard configuration



- First drawer provided with guarantee seal.
- No. 10 self-destructing seals.
- No. 3 lateral DIN bars.
- No. 1 back DIN bar.
- Centralized locking system with key.
- Double key.
- No. 4 swivable and stainless wheels of which 2 with pedal brake. No marking, extremely silent, sliding on high performing roller bearing.
- No. 4 bumpers for each corner of the base.
- Push and pull extra tray.
- Table top with integrated push handle.



### Do you want to customize the color?

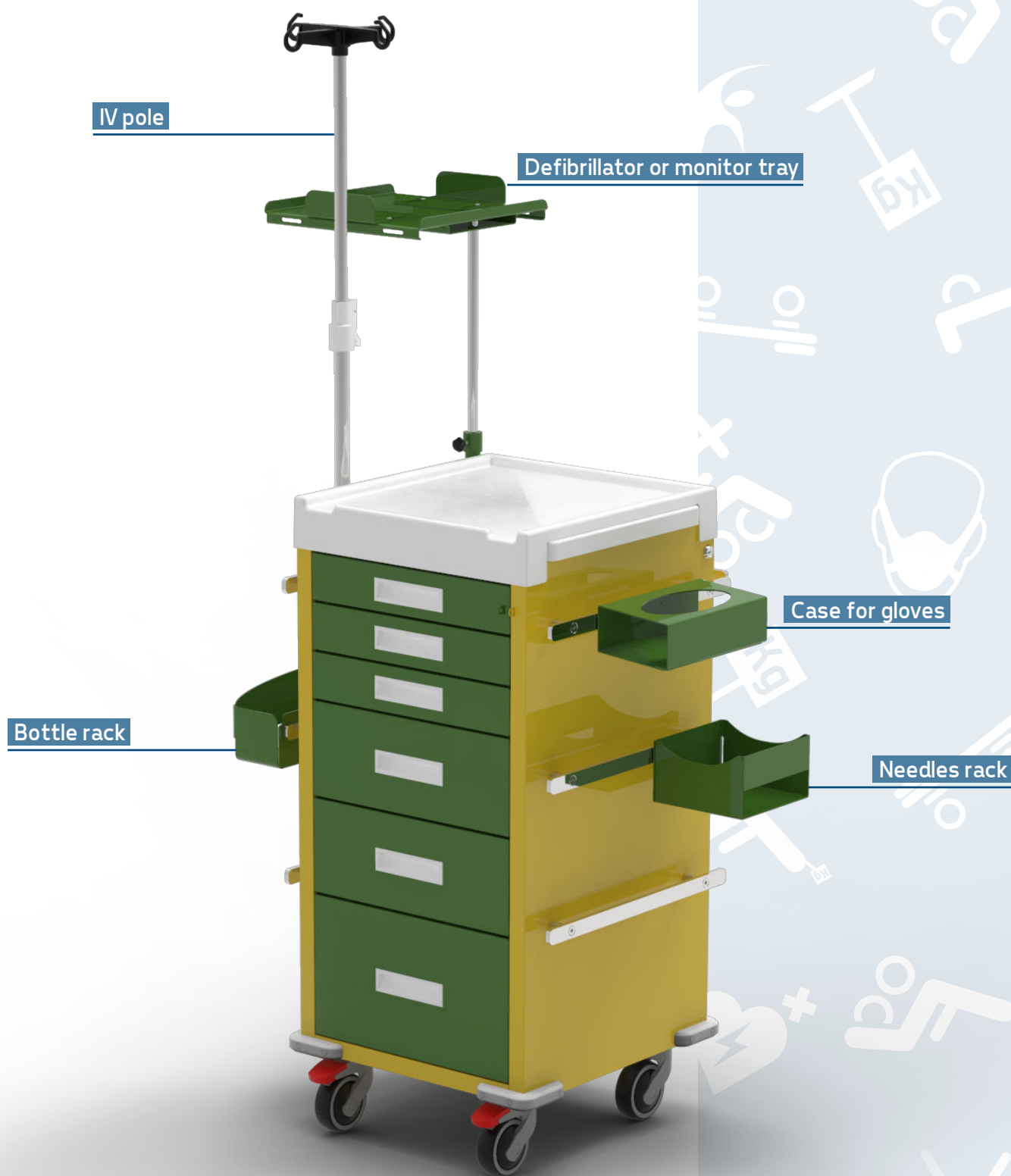
Frame or click the QR code and find out how to customize the device by consulting our color card.



## Recommended accessories

Kit composed by the following accessories:

- 1 Cod. ACCF1 - IV pole
- 2 Cod. ACCF7 - Bottle rack
- 3 Cod. ACCF8 - Case for gloves
- 4 Cod. ACCF9 - Needles rack
- 5 Cod. ACCF10 - Defibrillator or monitor tray



Recommended accessories



ACCF1



IV pole

ACCF2



Trash bin

ACCF3



Manual hand sanitizer

ACCF4



Automatic hand sanitizer

ACCF5



Hoxigen tank holder

ACCF6



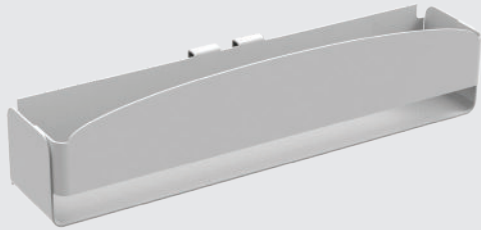
Defibrillator or monitor trays



## Recommended accessories

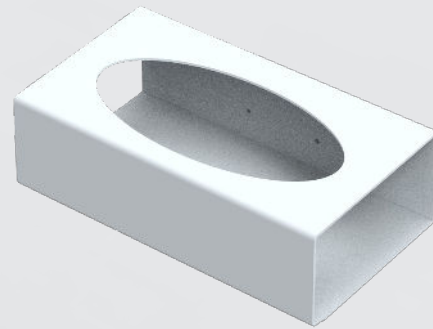


ACCF7



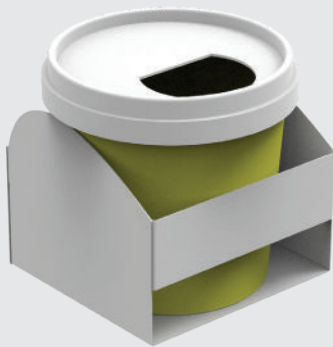
Bottle rack

ACCF8



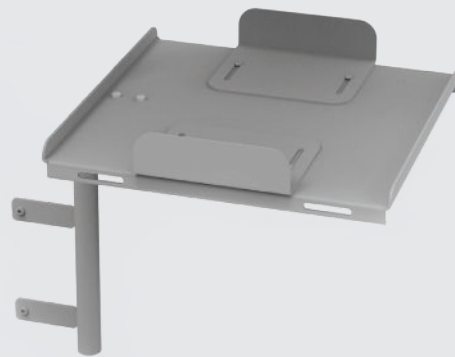
Case for gloves

ACCF9



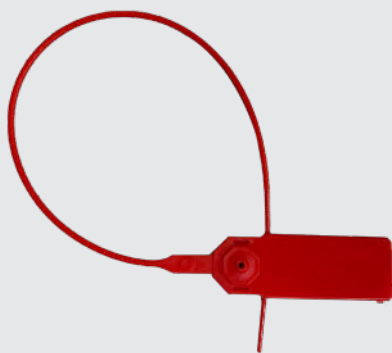
Needles rack

ACCF10



Defibrillator or monitor tray

ACCF12



Guarantee seal

ACCF13



Guarantee seal with serial number



## Recommended accessories

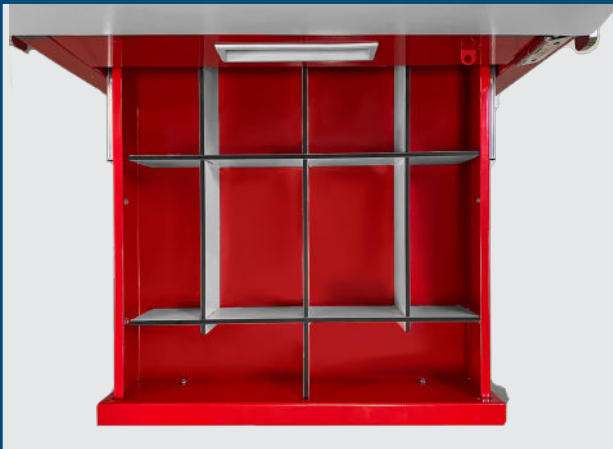


### ACCF14



Assemblable drawers cabinet

### ACCF15



Drawer dividers: ACCF15/1 - 10 compartments; ACCF15/2 - 15 compartments; ACCF15/3 - 20 compartments; ACCF15/4 - 25 compartments

### ACCF16



Centralized and sealable locking



## Available drawer's configuration



**3 drawers**  
dimensions 42x37,8x7,8h;  
**2 drawers**  
dimensions 42x37,8x15,8h;  
**1 drawer**  
dimension 42x37,8x23,7h;

**GB0321.SP-1**  
Drawer's configuration 3+2+1



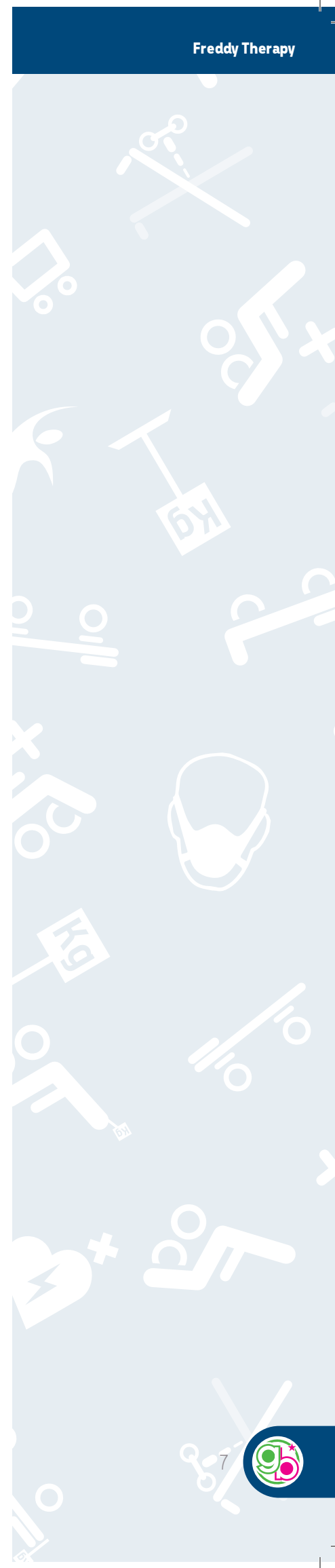
**1 drawer**  
dimension 42x37,8x7,8h;  
**3 drawers**  
dimensions 42x37,8x15,8h;  
**1 drawer**  
dimension 42x37,8x23,7h;

**GB0321.SP-2**  
Drawer's configuration 1+3+1

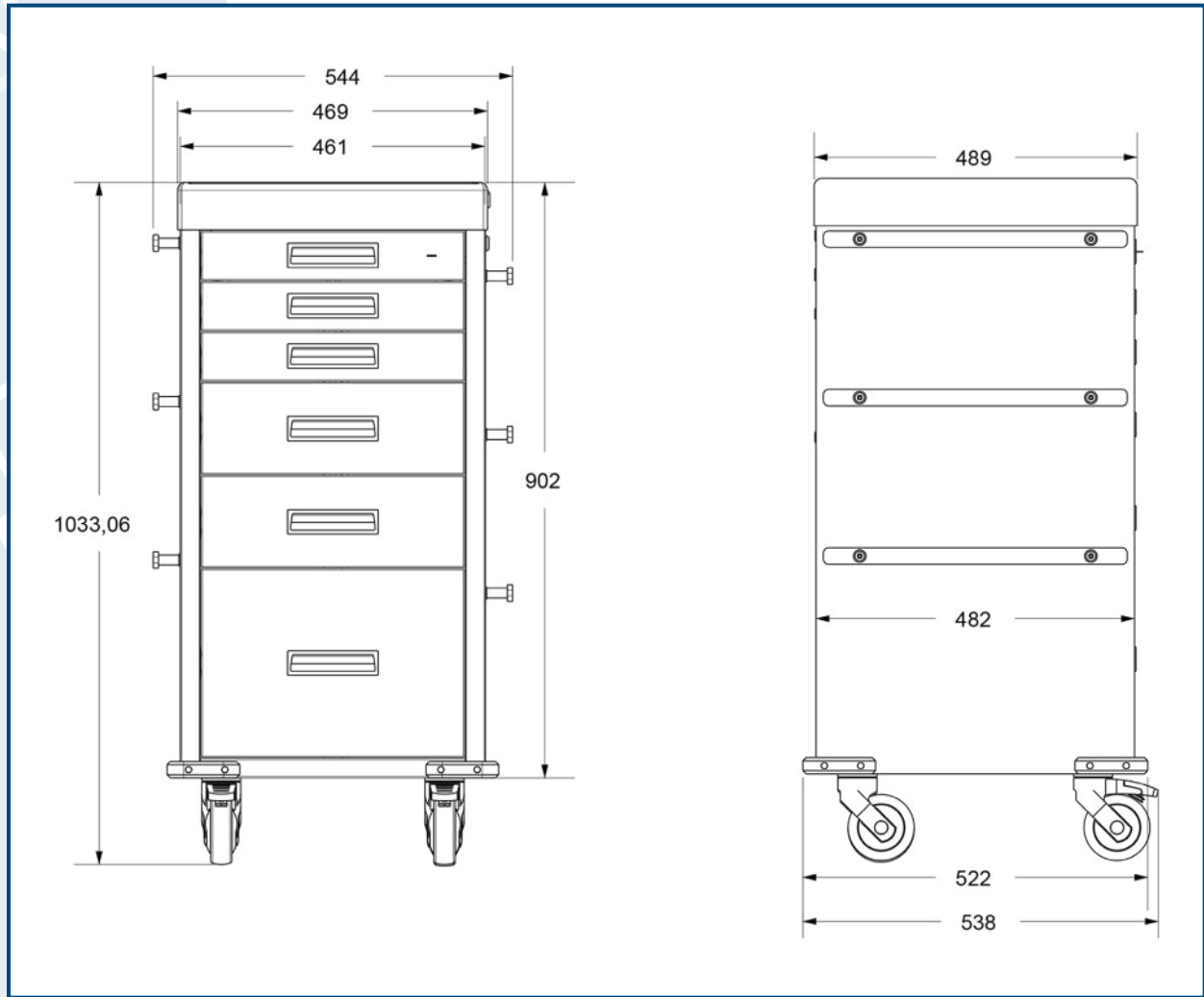


**2 drawers**  
dimensions 42x37,8x7,8h;  
**1 drawer**  
dimension 42x37,8x15,8h;  
**2 drawers**  
dimensions 42x37,8x23,7h;

**GB0321.SP-3**  
Drawer's configuration 2+1+2



## Dimensions



## Technical sheet

OFFICIAL DISTRIBUTOR IN AUSTRALIA:



**midmed**  
providing positive solutions

Unit 4/62 Borthwick Ave,  
Murarrie QLD 4172 (Australia)

Tel: 1300.643.633  
sales@midmed.com.au  
www.midmed.com.au

Codice GMDN	<b>46978</b>
ID Code	<b>GB0321.SP-1 GB0321.SP-2 GB0321.SP-3</b>
Intended use	Multifunctional cart
Manufacturer	GARDHEN BILANCE SRL
Configuration 3+2+1 (standard)	3 drawers 42x37.8x7.8h cm 2 drawers 42x37.8x15.8h cm 1 drawer 42x37.8x23.7h cm
Configuration 1+3+1	1 drawer 42x37.8x7.8h cm 3 drawers 42x37.8x15.8h cm 1 drawer 42x37.8x23.7h cm
Configuration 2+1+2	2 drawers 42x37.8x7.8h cm 1 drawer 42x37.8x15.8h cm 2 drawers 42x37.8x23.7h cm

For certifications please refer to "Certifications and Quality system" section

Pictures contained in this brochure is for illustrative purpose only. The manufacturer reserves the right to modify the projects without notice. For accessories identification please refer to the accessory catalogue or commercial offer. When data are different please refer to commercial offer.

Dep. EN\_189 rev. 28/06/2022