

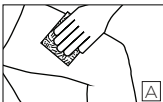
Dale®

Hold-n-Place®

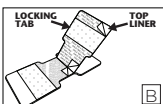
Foley Catheter Adhesive Patch

Application Instructions

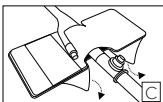
1. Clean and prepare application area. **(A)**



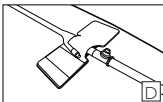
2. Open Dale Hold-n-Place to expose center liners. **(B)**



3. Remove center liners and place urinary catheter onto exposed adhesive. **(B)**



4. Wrap the locking tab beyond the lumen of the catheter, where the drainage bag connects. You may remove the top liner for extra securement. **(C)**



5. Remove base liners to expose adhesive and apply to skin. **(C)**

6. Dale Hold-n-Place should appear as shown in figure D when securement is complete. **(D)**

Change

Every 3 days or sooner if necessary.

Removal

Device should be removed with care to avoid skin trauma.

Additional Benefits

The locking tab may be lifted to reposition the tube.

For single patient use. Disposable.

For an application video please visit www.dalemed.com

Dale medical products are available from your preferred hospital/medical supply dealer.

Not made with natural rubber latex.

Dale® & Hold-n-Place® are registered trademarks of Dale Medical Products, Inc. in the USA.



Dale Medical Products, Inc.
40 Kenwood Circle • Suite 7
Franklin, MA 02038-3298
T: 508-695-9316



MDSS GmbH
Schiffgraben 41
D-30175 Hannover, Germany

