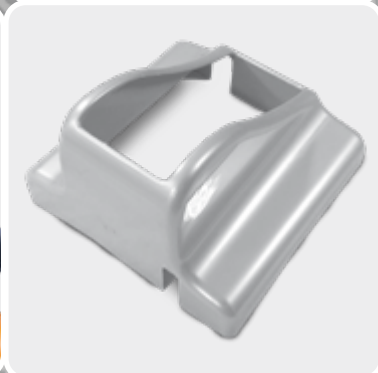


9

Accessories chairs

Accessories chairs

1



Accessories available for:

Hospital chairs:

STEPHEN H ANATOMICAL
STEPHEN H FLAT
STEPHEN H FREEDOM
STEPHEN H COMFORT VERS. 2-3
STEPHEN H-YBRID
ATHENA
UNICA
STEPHEN H ECO
STEPHEN H EASY
ECO 2.0

Hospital chairs with integrated scale:

STEPHEN SCALE H ANATOMICAL
STEPHEN SCALE H FLAT
STEPHEN SCALE H FREEDOM
STEPHEN SCALE H COMFORT VERS. 2-3
STEPHEN SCALE H-YBRID
ATHENA SCALE
CM/6R

AC2P



Object holder available on accessories pole. Adjustable in height and swivel. Removable.

AC3P



Customizable Bag holder hooks.

AC4P



IV Pole swivelling and adjustable in height. Stainless. Available with 2 or 4 hooks.

AC4/IP



IV Pole adjustable in height, onto accessories pole. Stainless. Available 2 or 4 hooks.

AC4P/2



IV pole on wheels.

AC4P/3



Dripstand (iv pole) on din bar for SH Flat, Athena, SH Comfort Vers.2, SH Eco Vers.2, Home Chair.

AC4P/4



IV pole with shaped tubular

AC4P/S



Predisposition for IV pole.

AC5P



Double castors - diameter 100mm.

AC5P/1



Double castors - diameter 150mm.

AC6P



Supplementar handset.

AC6MP



Handset with 13 buttons and 3 memory function buttons.

AC6P/2



Supplementar handset.

AC6P/3



Foot controls for synchronized backrest and leg adjustment for entry / exit position located on the frame

AC6P/4



Foot controls for seat angle adjustment that located the frame. Configurable with AC35

AC6P/5



Foot controls for variable height adjustment located on the frame. Configurable with AC28

AC6P/6



Foot controls for backrest adjustment located on the frame

AC7PIG



Simultaneous brake in zinc galvanized for rear wheels.

AC7PIS



Simultaneous brake in stainless steel for rear wheels.

AC7P2G



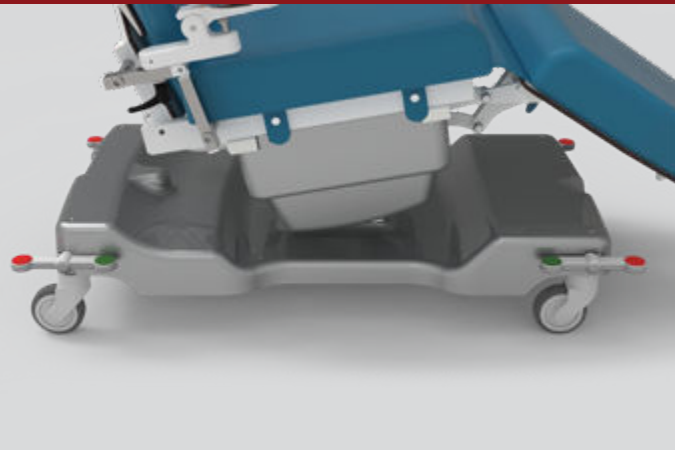
Central brake on 4 wheels with directional system. Useful for the movement inside the hospital. Activation through rear bilateral pedal. Mechanics made with galvanized steel.

AC7P2S



Central brake on 4 wheels with directional system. Useful for the movement inside the hospital. Activation through rear bilateral pedal. Mechanics made with stainless steel.

AC7P3



Bilateral front/rear pedal brake.

AC7P/4



Centralized brake. Activated through pedal control.

AC7P5G



Centralized braking system without directional wheels.

AC8P



Quick mechanical release of backrest. In case of medical emergency, the backrest goes down quickly, through the use of the lever.

AC9B



Disposable non woven cover for armrest 50g/sqm. Kit 2 pcs, Minimum quantity 100 kit.

AC9P



Disposable non woven cover for chair 50g/sqm. Kit 1 pcs, Minimum quantity 60 kit.

AC10P

AC10P/1

AC10P/2



Disposable non woven cover for chair 50g/sqm. Kit 2 pcs, Minimum quantity 100 kit.

Shock position: seat/leg -15°, backrest parallel to the floor.

Shock position: seat/leg -10°, backrest parallel to the floor.

AC11



Stainless roll holder. Suitable for 600 mm roll ø 140 mm..

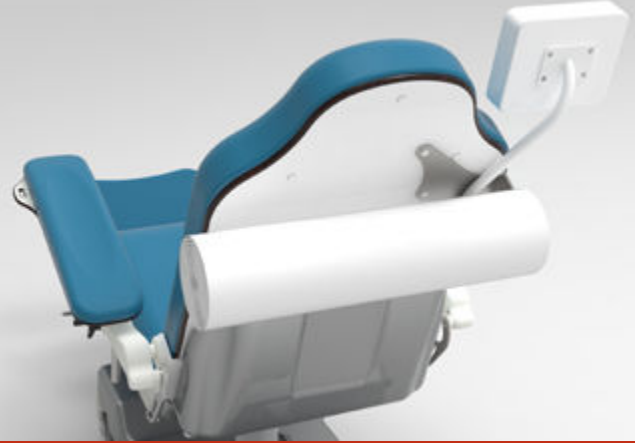


AC11/1



Stainless roll holder. Suitable for 600 mm roll ø 140 mm. After sales provision. Assembly cost is not included in the pricelist.

AC11/C



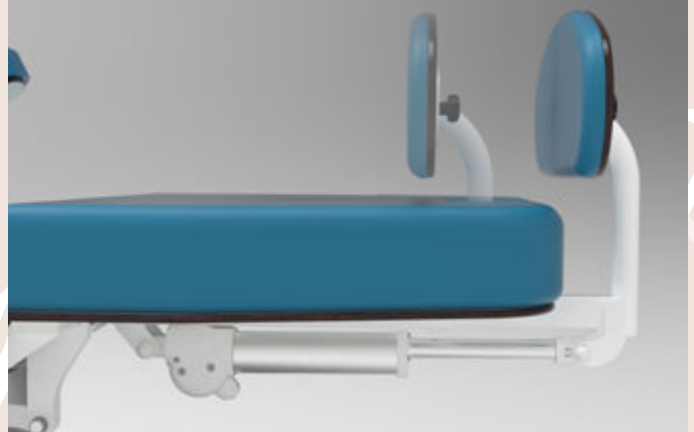
Rollrest for Stephen H Comfort 600 mm.

AC12



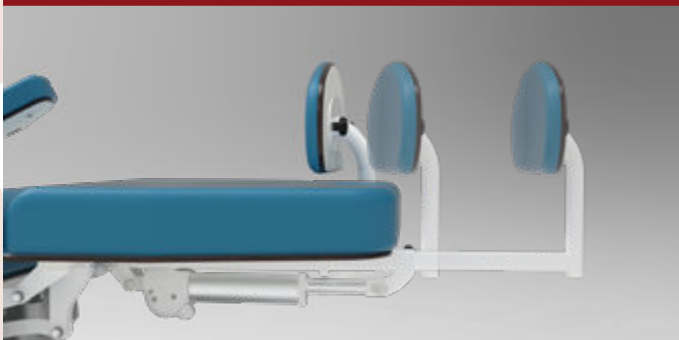
The basic chair, see compatibility cross reference, is equipped with one motor for the simultaneous movement of backrest and legrest. With AC12 code, the chair will be provided with one extra motor for the independent movement of backrest and legrest.

AC13



Electrical telescopic footrest in stainless steel. Driven by handset. Provided with HPL panel.

AC13/1



Electrical telescopic footrest in stainless steel and further manual extension. Driven by handset. Provided with HPL panel.

AC13/SH1



Motorized footrest for SH/Athena line. Equipped also with further manual extension. Made in painted steel.

AC13/C1



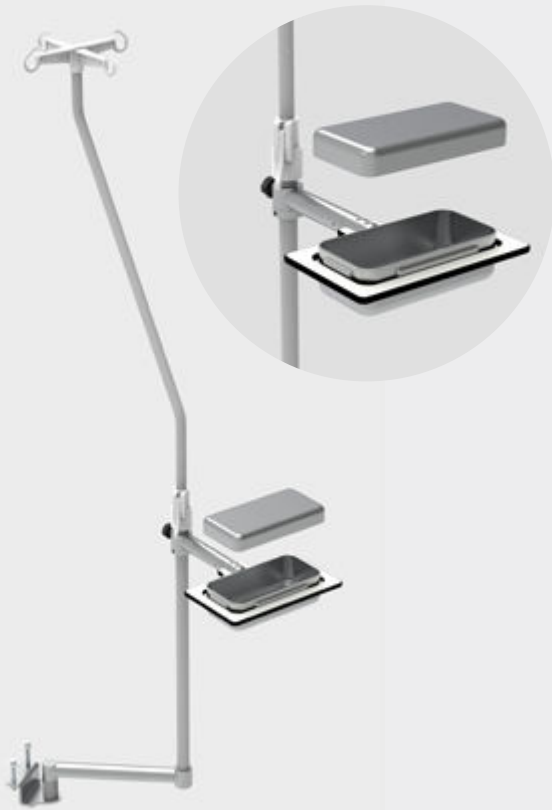
Motorized and adjustable footrest for H Comfort in painted steel with epoxy paint. It can be reverse in order to adapt to patient's height, easily removable. It can be activated through the standard handset and it is provided with padded panels in leatherette. Rigid plate in HPL.

AC13/C2



Motorized and adjustable footrest for H Comfort in stainless steel with epoxy paint. It can be reverse in order to adapt to patient's height, easily removable. It can be activated through the standard handset and it is provided with padded panels in leatherette. Rigid plate in HPL.

AC14P



Stainless steel toolrest, swivel and adjustable in height, on accessories pole. Size mm 250x120x60h. Available on request with different sizes. Provided with HPL panel.

AC14P/1



Stainless steel toolrest, swivel and adjustable in height, on accessories armrest. Size mm 250x120x60h.

AC15/PLUS



Lightweight side table in painted steel on swivable wheels. Foldable and adjustable in height with reading position also available. Gas spring for height adjustment. Max load 10 kg. Support surface size 420 x 550 mm. Min height 830 mm, Max height 1100 mm.

AC15/TOP



Side table with double support.

AC16



Telescopic footrest in stainless steel. Manually adjustable. Provided with HPL panel.

AC16/1



Padded cushion for footrest. To be used without shoes. Fixed to the HPL panel through knobs. Easy and quick to use.

AC17P



Battery backup box. Useful for functionality of the armchair in emergency case of main power failure. This battery ensures many duty cycles.

AC17P/A



N.2 Batteries 4,5 ah with charger

AC18



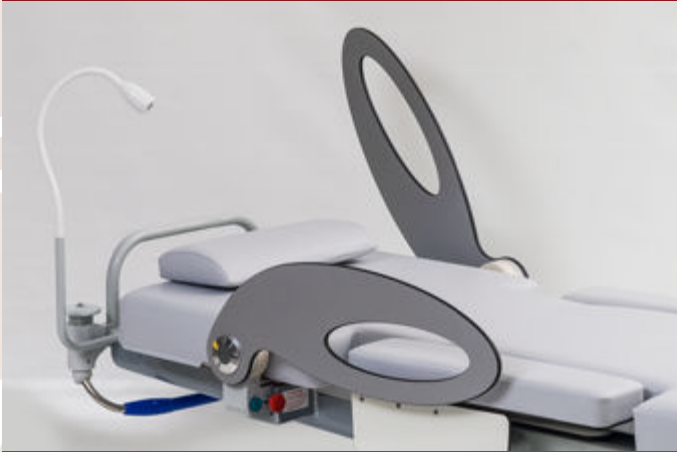
Handset cover.

AC19



Stainless steel mechanics for armrests.

AC21/HP2



Elliptical side rails in HPL. Not compatible with external armrest AC30H1.

AC25P



Handset support.

AC26

CHECKING ROUTINE WITH ALARM FOR LOSS WEIGHT CONTROL, DURING DIALYSIS SESSION. SOFTWARE FOR DEVICES WITH INTEGRATED SCALE.

Weight loss alarm.

AC27



Additional neck pillow, adjustable in height. Made with expanded polymeric foam. Antibacterial fabric.

AC27/1



Additional neck pillow, adjustable in height. Visco elastic- memory foam. Antibacterial fabric.

AC27/2



Additional neck pillow (higher) with adjustable height. Visco elastic - memory foam. Antibacterial fabric.

AC27/3



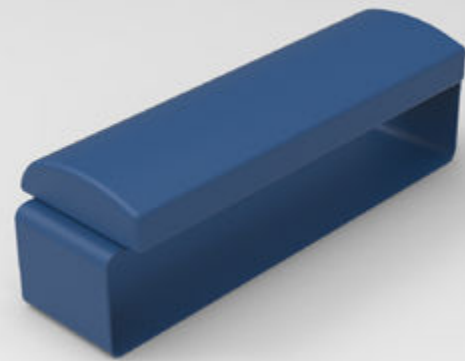
Supplementary headrest pillow for S H Comfort.

AC27/4



Supplementary headrest pillow for S H Freedom.

AC27/5



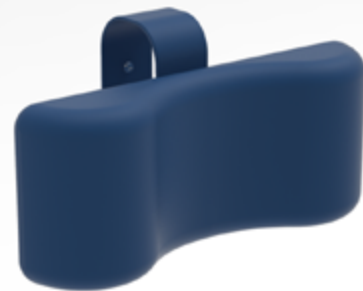
Supplementary headrest pillow for S H Ybrid 2.0.

AC27/6



Supplementary headrest pillow for S H Eco 2.0.

AC27/7



Supplementary headrest pillow for S H Athena 2.0.

AC28/200



Electrical adjustable height with dynamic load 200 kg. 300 mm stroke.

AC28/200-400



Motorized adjustable height with dynamic load 200 kg and 400 mm stroke.

AC28/300



Electrical adjustable height for bariatric chair with dynamic load 300 kg. 250 mm stroke.

AC29



Velcro band for armrest.

AC30P



Multifunctional armrest. Adjustable in height, swivelling, inclination, tilting, removable. Made with stainless steel and aluminum.

AC30/E



Multifunctional and electrically adjustable armrest. Swivelling, inclination, tilting, removable. Made with stainless steel and aluminum.

AC30/EH



Electrical embedded armrest for H-brid. Simultaneous movement through handset. 150 mm stroke.

AC30/HI



Electrical adjustable external armrest for H-brid. Adjustable in height, swivable and removable.



AC30/C1



Multifunctional armrest. Movement synchronised with the backrest (1-2) swivelling (3) adjustable in height, (4) removable (5) tilting (6) inclination (7).

AC30/C2



AC30/C1 multifunctional armrest with slide function.

AC30/C3



Armrest with special rotation mechanism, it allows to arrange the arm during therapy.

AC31



Junction cushion made with expanded soft foam and antibacterial fabric.

AC33



Headrest manually adjustable in height. 4 different positions. Stainless steel mechanism. AC33/1.

AC32P



Led lamp. On-Off switch can be easily reached by the patient.

AC33/1



Reclining headrest 0/15° for SH FLAT.



AC34P



Handset inhibition device for nursing staff. Image for illustrative purpose only.

AC35



Seat parallel to the floor.

AC35/1



Electrical seat movement from 0° to -15°, driven by handset. It grants an optimal posture and prevents decubitus sores.

AC35/2



Electrical seat movement from +3° to -12°, driven by handset. It grants an optimal posture and prevents decubitus sores.

AC35/3



Electrical seat movement from -10° to -25°, driven by handset. It grants an optimal posture and prevents decubitus sores. Not available for "H Comfort" series.

AC36



PVC cover for armrest protection.

AC36/1



PVC cover for footrest.

AC36/2



PVC cover for legrest. One piece with the cushion. Removable on request.

AC37



Extra large armrest 200 mm.

AC37/1



Armrest extra long.

AC37/A



Extra large armrest for AKKA 360 x 120 mm.



AC37/3



Armrest with backward elongation.

AC37/4



Seamless armrest.

AC38



Additional lowered seat cushion.



AC39



90° legrest relative to the floor. Refers to accessories cross reference for compatibility.

AC40



Inflatable external lumbar pillow.

AC40/1



Inflatable external lumbar pillow.

AC40/3



External extra lumbar cushion.

AC41



Thermal printer for devices with integrated weighing system. Small size. It is suitable for printing weight value in real time. Powered with rechargeable battery. Located on a customizable support.

AC43P



Monkey pole with ergonomic handle, adjustable in height. Reinforced steel tube.

AC48



TV 22"/24' fitted on swivel support.

AC48/SP



Colour tv attachment.

AC48/PP



Predisposition for TV colour attachment

AC48/PL



Predisposition for Tv color support on chair for AC48/SP

AC49



Twin side panels.

AC50P



Cable support

AC51



Memory foam - visco elastic backrest.

AC52



Memory foam - visco elastic seat.

AC55P



Removable built-in table. Size 420x550 mm.

AC56



Transport handle in stainless steel.

AC56C

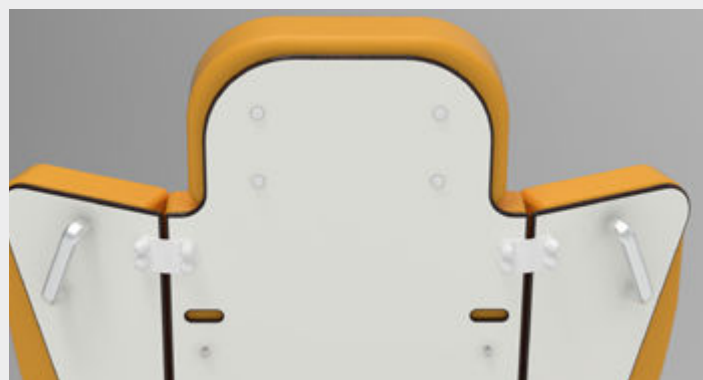


Transport handle for H Comfort line.

AC56/I



Confort Serie



SH Serie

PVC transport handles.

AC57



Printed twin side panels AC49.



AC60



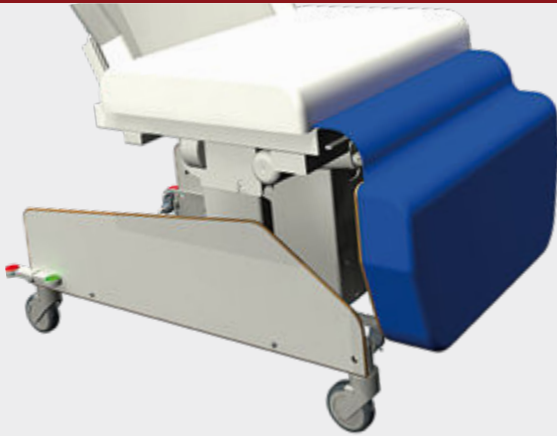
Seat-belts.

AC63



90° degree legrest compared to the seat.

AC63/1



90° degree legrest compared to the seat.
Bariatric version.

AC73



Side table cushion (available only in presence of
AC49).

AC74



Automatic emergency button for Trendelenburg or
Shock position.

AC74/1



Automatic emergency button for entry position.

AC74/2



Automatic emergency button for clinostatism.

AC74/3



Red button for emergency stop.

AC75



Cup holder under the armrest.



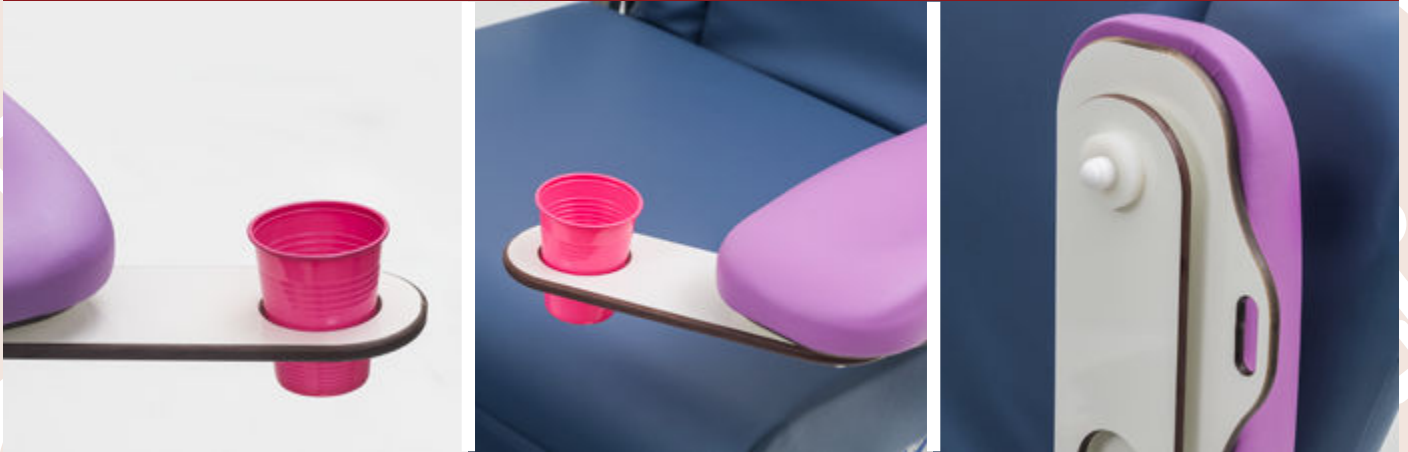
AC75/1



Courtesy table under the armrest.

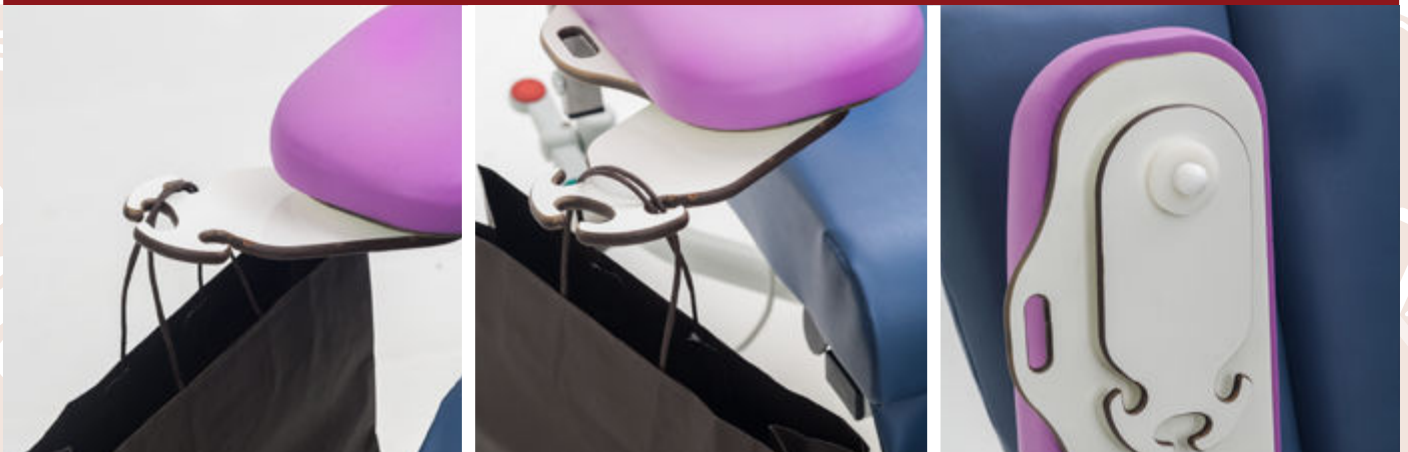


AC75/2



Extra long cup holder under armrest.

AC75/3



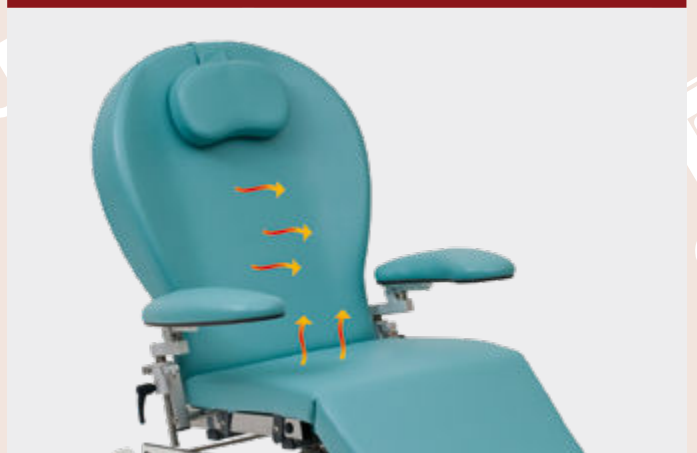
Multifunction hooks under armrest.

AC77



Extra backrest cushion.

AC79



Thermo-padding for backrest or seat.

AC81P



Small removable and adjustable table. Made out of stainless steel and aluminium provided with raised edges. Non porous material for hygienic purposes. Dimensions 440x340mm.

AC81/SP



Predisposition for AC81 removable table

AC82



Motorized telescopic leg section. 90° legrest.

AC82/1



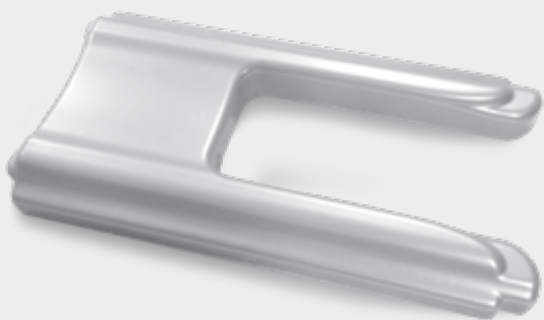
Motorized telescopic leg section. Bariatric.

AC83



ABS base cover.

AC83/H



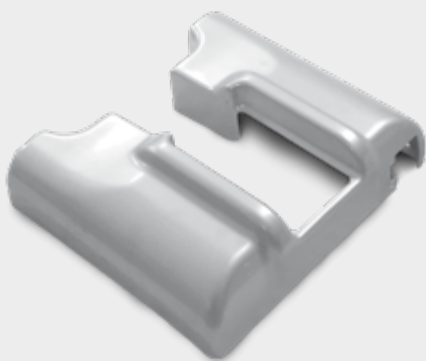
ABS Base cover for H Ybrid.

AC84



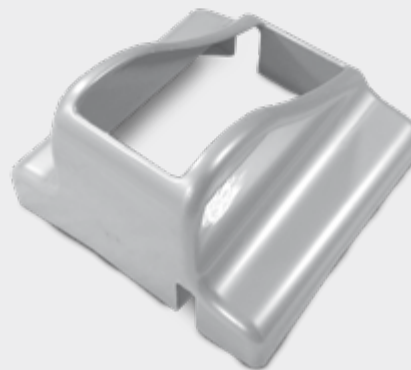
ABS Seat cover

AC84/C



H Comfort ABS seat cover.

AC84/H



H-ybrid ABS seat cover.

AC85



ABS leg cover.

AC85/C



Cover ABS seduta.

AC86/C



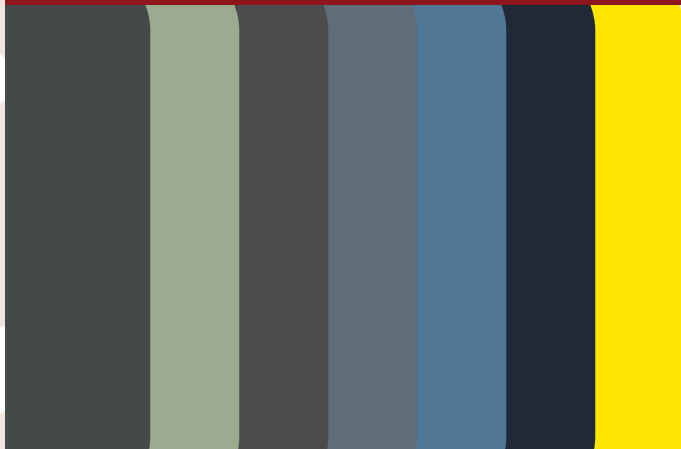
ABS H comfort backrest cover.

AC86/H



ABS H-ybrid backrest cover.

AC87



Siliconic upholstery. Refers to colour chart.

AC87/I



Non-marking upholstery. Refers to colour chart.



AC88



Water repellent, washable and breathable armrest cover

AC89



Water repellent, washable and breathable chair cover

AC90/H



Non-woven cover for H Ybrid

AC90/H1



Cotton cover for H Ybrid.

AC94P



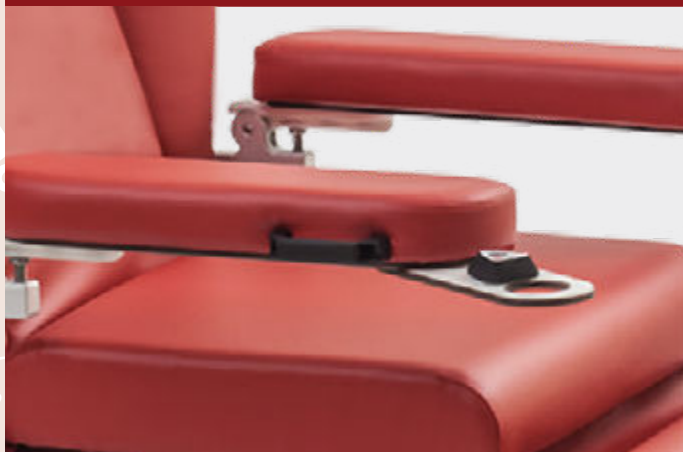
Wireless Kit for nursing calling.

AC95P



Oxygen holder.

AC96P



Wireless calling button.

AC99



90° backrest.

AC109



Side rails on DIN bar.

AC109/1



Side barriers on DIN bar for Athena



AC110



Stirrups on DIN bar.

AC115



Keyboard for movements located on the Fly plus scale display fly plus model, with customized software and movement commands: backrest, leg, height adjustment. Buttons for entry and CPR position. Data storage.

AC116



Flexible document holder. 26x35cm.

AC117



Multiple transport handle. It is intended to be extremely useful in both stretcher position and chair position.

AC118



Fifth directional wheel operated by pedal.

AC119



Hip belt.

AC122



Independent pneumatic movement for backrest/legrest for AKKA hospital chair.

AC132



Athena 2.0 foldable side rails.

AC134



DIN Bar 25 x 8 mm.

AC135



N.4 non-slippery feet for AKKA.

AC136



N.2 125 mm rear directional wheels with 2 front non-slippery feet.

AC144



Multifunctional armrest on DIN bar

AC145



Support and IV pole on DIN bar _ accessory with radial joint

AC146



USB port for electrical devices supply.

AC150



Leg section with retractable footrest for SH line.

AC153



Rotating footrest with automatic braking system.

AC157



Available headrests in a choice of 8 and backrest.

AC159



Column stand for battery charger

AC164



Swivable display box 90° for chairs with integrated scale..

AC174



Footrest with leg section 90° somebody/180° compared to the floor and with foldaway folding footrest for Stephen H Anatomical - leg section 90° somebody. and retractable footrest.