

premiumLine



Our top models

As the fruit of our decades of experience in the field of ophthalmic and microsurgery, we have managed to design absolute high-end, top quality models. Allow yourself to be swept away by the innovative materials, the visionary shapes, the elegant design and the sophisticated extra functions.

Set new standards in your operating room!

Discover our *surgiForce* and *surgiForce light* models and allow yourself to be swept away by their economy, effectiveness and quality. These models stand for ultra-precise navigation within the operating field, sterile operation, and a comfortable, non-fatiguing work environment – for a work flow worthy being rated "Premium deluxe". They combine particularly well with our *premiumLine eyeForce* treatment chair.

Demand the best!



The "Preventive Technology" award reflects uncompromising lightweight construction, outstanding ergonomic operability and space-saving design. Back problems for surgeons are now a thing of the past. This is our contribution to effective health and safety in the workplace.

**High end quality
for microsurgery**

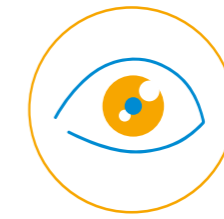
surgiForce

Comfort seat (Illustration) Item No.: 2600 0004
Formed seat Item No.: 2600 0008



surgiForce light

Comfort seat **Item No.:** 2600 0006
Formed seat (Illustration) **Item No.:** 2600 0009



Ophthalmic surgery



Neurosurgery
Microsurgery



ENT surgery

surgiForce



Item No.: 2600 0004 with Comfort seat
Item No.: 2600 0008 with Formed seat (Illustration)

That is high tech and high precision.

The ultimate surgeon's chair for microsurgery.

Sophisticated engineering, design and function down to the smallest detail. Amazing range of armrest adjusting functions: Turn it, tilt it, rotate it, extend it – to support each of the surgeon's arm movements with the greatest of ease! Ultra-precise navigation within the operating field, sterile operation, and a comfortable, non-fatiguing work environment – for a work flow worthy being rated "Premium de luxe".



MED.TEC at its highest level

Double castors

The five high-grade double castors are smooth-running and rotated by 360 degrees. This means no-limits mobility, especially in confined operating room spaces. *surgiForce's* central front castor in particular gives extra stability to keep the treating surgeons safely in place whenever they shift their bodyweight forward.



Chassis

The drive mechanism's base is made of cast aluminum. This means maximum stability and longevity and no-limits mobility. The material and workmanship meet the strictest sanitary requirements.



Plastic cover panels

The high-sheen plastic cover panels with their scratch-resistant and impact-modified surface finish are extremely hygienic and easy to disinfect.



Armrests with "de luxe" feature



3D freedom of movement

High-precision, maintenance-free ball joint for full 360-degree range armrest movements around all axes. Ultra-lightweight guide system for fast, efficient and vibration-proof adjustment of individual underarm positions.

Need to readjust *surgiForce* while maintaining sterile conditions? Not a problem! In addition to the foot keypad, *surgiForce* features so-called "one-hand triggers" underneath the armrests. Lift them briefly to adjust the height!

Angled armrest support for increased freedom of armrest movement around the lateral axis.



Armrests

Made of molded PUR foam - pleasant to the touch, no slick leatherette cover - for guaranteed secure hold. Suitable for disinfectants.



Linear guides

To give you that extra margin of flexibility: Armrests with linear guides! Applying pressure with your forearm will make the arms "glide" effortlessly in longitudinal direction while letting go will stop them by self-locking mechanism - available as an option.

Item No.: 3351 1008



Multi-function unit

Sterile actuation by foot

To activate the multi-function unit, tap it with your foot. It allows you to easily adjust the height of the seat (black pedal) and the armrests (gray pedal) independently of each other.

Intuitive foot keypad operation of the multi-function unit for powered seat height and armrest adjustment. Activation is signaled by acoustic and visual signals.

Abrasion-resistant corner guards (orange) made of synthetic rubber take the stress out of maneuvering *surgiForce* even at close quarters to other medical equipment.



Braking system

The easy-to-reach and easy-to-use central brake acts on all four double castors to keep the *surgiForce* safely and reliably in the desired position.



Seating systems with sliding carriage



Seat angle adjustment

Back angle adjustment

Back height adjustment



Comfort

The seating system Comfort: With mechanical individual adjustment functions. For a correct, back-friendly sitting and working posture, the seat surface or the seat depth can be adjusted by a sliding mechanism located underneath the seat.



Seat angle adjustment

Back angle adjustment

Back height adjustment



Formed seat

The form seating system: With enlarged contact surface for more comfort and optimum weight distribution. The seat surface can be individually tilted forward and fixed together with the backrest. In addition, angle and height adjustment of the backrest ensure an ideal sitting posture.



Upholstery/color card

Standard color
black
Item No.: 3037 0235



"PeriLine" Page 105

Comfort

Standard color
anthracite
Item No.: 3037 0052



"skai Tundra" Page 102

"skai Pandora Plus" Page 103

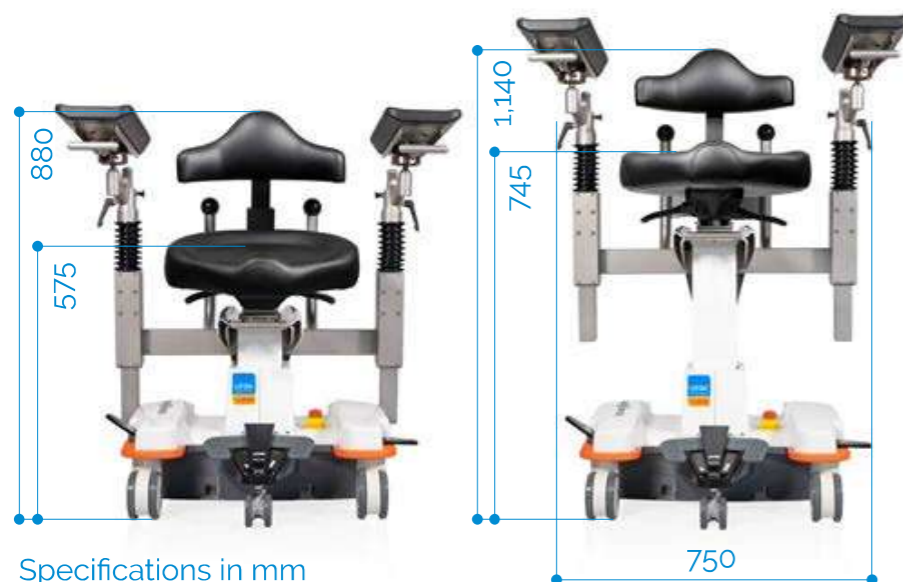
Formed seat

Technical dimensions

Seating system Comfort

Minimum

Maximum



Specifications in mm

Seating system Formed seat

Minimum

Maximum



Specifications in mm

WITH PRODUCT UPGRADE

A **lifting column shortened** by 30 mm for a lower entry and seat height for the surgeon.

Mains-free operation

Accumulators

The charger-battery-control unit integrated in the drive mechanism permits mains-free operation at protective low voltage. Splash-protected charging socket on the bottom of the drive mechanism.



Technical specifications

Lifting column

- Lifting height of the seat 170 mm
- Lifting height of the armrests 125 mm
- Electromotive adjustment via the foot control elements

Dimensions maximum (LxWxH) incl. armrests

- with Comfort seat 860x750x1,140 mm
- with Formed seat 860x750x1,220 mm

Chassis

- Castors \varnothing 100 mm
- 5th castor \varnothing 65 mm
- Central brake acting on all four castors
- Emergency stop button

Battery unit

- Lead-gel battery, 2 pcs. 12 V, 2.9 A
- Universal battery charger: Input: 100–240 V
Output: 24 V

Seating systems:

Comfort | Formed seat

- Min. sitting height 575 mm | 570 mm
- Max. sitting height 745 mm | 740 mm
- Seat adjustment mechanism 120 mm | 120 mm
- Seat angle adjustment $-9^{\circ}/+3^{\circ}$ | -11°
- Back angle adjustment $-21^{\circ}/+2^{\circ}$ | $-25^{\circ}/+2^{\circ}$

Weight

74 kg

Max. load

150 kg

Subject to technical modifications.

surgiForce light



Item No.: 2600 0006 with Comfort seat
Item No.: 2600 0009 with Formed seat (Illustration)

surgiForce light – extraordinary technology and materials in typical *surgiForce* premium design, in combination with other control elements:

A clearly structured twin foot keypad plus manually operated gas spring mechanisms in the arm supports – for surgeons wishing to precision-adjust their arm position with minimum fuss.



MED.TEC at its highest level

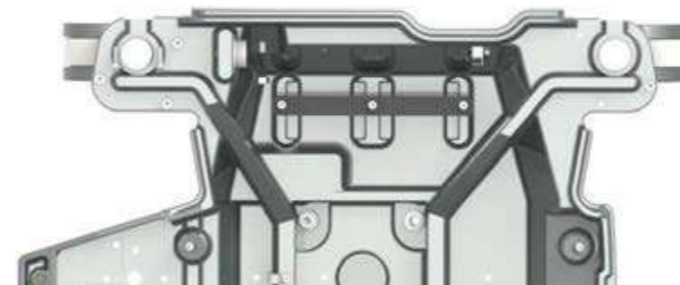
Double castors

The five high-grade double castors are smooth-running and rotated by 360 degrees. This means no-limits mobility, especially in confined operating room spaces. *surgiForce's* central front castor in particular gives extra stability to keep the treating surgeons safely in place whenever they shift their bodyweight forward.



Chassis

The drive mechanism's base is made of cast aluminum. This means maximum stability and longevity and no-limits mobility. And the material and workmanship meet the strictest sanitary requirements.



Plastic cover panels

The mirror-finish plastic cover panels with their scratch-resistant and impact-modified surface finish are extremely hygienic and easy to disinfect.



PREMIUM
LINE

Armrests with gas-spring mechanism

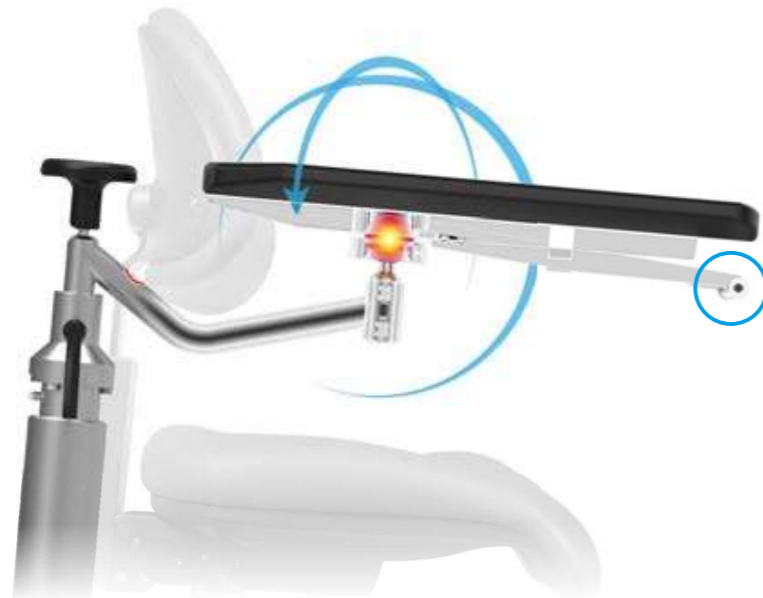


3D freedom of movement

High-precision, maintenance-free ball joint for full 360-degree range armrest movements around all axes. Ultra-lightweight guide system for fast, efficient and vibration-proof adjustment of individual underarm positions.

Need to readjust *surgiForce light* while maintaining sterile conditions? Not a problem! In addition to the foot keypad, *surgiForce light* features so-called "one-hand triggers" underneath the armrests.

Angled armrest support for increased freedom of armrest movement around the lateral axis.



Sterile height adjustment

The height of the armrests can be adjusted independently of the seat and independently of each other.

The gas spring mechanism is controlled manually with a rolling movement using the elbow and hand.



Rotate, tilt, swivel: The arm rests can be moved quickly and easily in three dimensions. The entire arm can also be turned to the side.



WITH PRODUCT UPGRADES

Arm supports offset to the rear (V-shaped traverse) for even better access to the operating field.

In comparison with the previous version until 2024 (blue figure).

A **lifting column shortened** by 30 mm for a lower entry and seat height for the surgeon.



PREMIUM LINE

Multi-function unit

Foot operated

Timeless foot keypad design for UP/DOWN seat height adjustment with non-slip polyamide touch surfaces. Easy-to-reach brake levers on either side of the driving mechanism for centralized braking/unfettered maneuvering.

Abrasion-resistant corner guards (orange) made of synthetic rubber take the stress out of maneuvering *surgiForce light* even at close quarters to other medical equipment.



Braking system

The easy-to-reach and easy-to-use central brake acts on all four double castors to keep the *surgiForce light* safely and reliably in the desired position.



Seating systems



Comfort

The Comfort seating system: with mechanical individual adjustment functions. An additional lumbar support as a backrest provides relief for the spine. Sliding carriage for adjusting the seat depth optionally available.

Seat angle adjustment



Back angle adjustment



Back height adjustment



Formed seat

The form seating system: With enlarged contact surface for more comfort and optimum weight distribution. The seat surface can be individually tilted forward and fixed together with the backrest. In addition, angle and height adjustment of the backrest ensure an ideal sitting posture.

Seat angle adjustment



Back angle adjustment



Back height adjustment



Upholstery/color card

Standard color
black
Item No.: 3037 0223



"PeriLine" Page 105

Comfort

Standard color
anthracite
Item No.: 3037 0052



"skai Tundra" Page 102

"skai Pandoria Plus" Page 103

Formed seat

Technical dimensions

Seating system Comfort

Minimum



Maximum



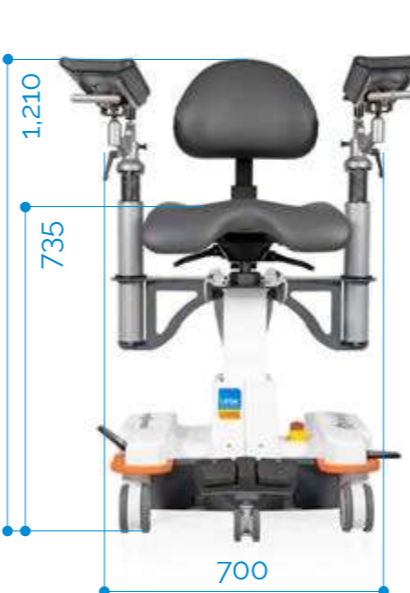
Specifications in mm

Seating system Formed seat

Minimum



Maximum



Specifications in mm

Accumulators

The charger-battery-control unit integrated in the drive mechanism permits mains-free operation at protective low voltage. Splash-protected charging socket on the bottom of the drive mechanism.



Technical specifications

Lifting column

- Lifting height of the seat (electromotive adjustment via the foot control) 170 mm
- Lifting height of the armrests 135 mm

Dimensions maximum (LxWxH) incl. armrests

- with Comfort seat 825x700x1,125 mm
- with Formed seat 825x700x1,210 mm

Chassis

- Castors ø 100 mm
- 5th castors ø 65 mm
- Central brake acting on all four castors
- Emergency stop button

Battery unit

- Lead-gel battery, 2 pcs. 12 V, 2.9 A
- Universal battery charger: Input: 100–240 V
Output: 24 V

Seating systems:

- | | Comfort | Formed seat |
|--------------------------|----------|-------------|
| • Min. sitting height | 570 mm | 565 mm |
| • Max. sitting height | 740 mm | 735 mm |
| • Seat angle adjustments | -9°/+3° | -11° |
| • Back angle adjustments | -21°/+2° | -25°/+2° |

Weight

71 kg

Max. load

150 kg

Subject to technical modifications.

Components



surgiForce
Formed seat Item No.: 2600 0008

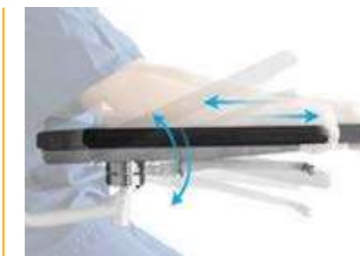


surgiForce
Comfort seat Item No.: 2600 0004



Foot release for sliding carriage,
for sterile adjustment of the sliding carriage

Item No.: 3351 1042



Armrest pair with
linear guide and
one-hand release,
factory-fitted

Item No.: 3351 1008



Armrest pair with
one-hand release for
neurosurgery (angular),
retrofit kit

Item No.: 3351 1010



Footswitch plate
429x820 mm, height 53 mm

Item No.: 3317 0000



Footswitch plate
429x670 mm, height 53 mm

Item No.: 3351 1041

PREMIUM
LINE

Components



surgiforce light
Formed seat **Item No.:** 2600 0009



surgiforce light
Comfort seat **Item No.:** 2600 0006



Seat adjustment mechanism for optimum access to the operating field, adjustment 120 mm, factory-fitted

Item No.: 3351 1013



NEW

Seat adjustment mechanism incl. foot release for sliding carriage, for sterile adjustment of the sliding carriage, adjustment 120 mm

Item No.: 3351 1043



Footswitch plate
429x820 mm, height 53 mm

Item No.: 3317 0000



Footswitch plate
429x670 mm, height 53 mm

Item No.: 3351 1041



Armrest pair with linear guide and one-hand release, factory-fitted

Item No.: 3351 1008

PREMIUM
LINE

performanceLine



Our classics

They represent proven and time-tested technology in a modern design, they are deliberately low-tech, and they offer an extremely attractive price-performance ratio.

Space-saving design and outstanding maneuverability coupled with a lean range of easy-to-manage functions.

Do you want flexible use in confined spaces with power-supply independent battery operation?

Then you should go for our classic:
The *surgiTrend* and *surgiLine* models – perfect in combination with our *performanceLine*, 500 *XLE* and 500 *XLE* *comfort* treatment chairs.

performanceLine systems
are designed for user satisfaction

Designed for continuous use in serially equipped operating theaters with high patient turnover, the *performanceLine* satisfies every user thanks to its easy handling before, during and after the surgery.



As an award-winning “Preventive Technology”, the *performanceLine* protects your surgeon from back problems thanks to its lightweight design and easy maneuverability.

**Functionality
in a nutshell**

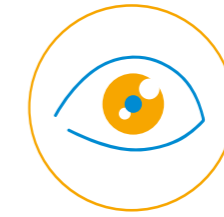
surgiTrend

Comfort seat (Illustration) Item No.: 2200 0012
Dynamic seat Item No.: 2200 0010



surgiLine

Formed seat (Illustration) **Item No.:** 2200 0008
Comfort seat **Item No.:** 2200 0013



Ophthalmic surgery



ENT surgery

surgiTrend



Item No.: 2200 0012 with Comfort seat (Illustration)
 Item No.: 2200 0010 with Dynamic seat

For back protection and maximum work flexibility in confined spaces. Sophisticated, space-saving drive mechanism with reduced size for ample foot space combines tilt stability with easy and smooth maneuvering. Outstanding sitting comfort and a wide range of adjusting functions allow every surgeon to find his or her personal best and healthiest working position for any work scenario. Available in two seating system types: Comfort or Dynamic.



Seating systems



Comfort

Seat angle adjustment



Back angle adjustment



Back height adjustment



Upholstery/color card

Standard color
black
Item No.: 3037 0223



"PeriLine" Page 105

Comfort



Dynamic

Dynamic-function



Lumbar support angle adjustment



Lumbar support height adjustment



Standard color
black
Item No.: 3037 0021



"Stamskin Top" Page 104

Dynamic

Armrests

- Stable, ergonomically shaped armrests with curved support surface (350 x 120 mm)
- Height-adjustable and equipped with a ball joint for 360-degree rotation
- Designed for personalized adjustment to the surgeon
- Optionally available with one-hand release
- Optionally available with linear guide and one-hand release



Chassis

- 4 high-quality, smooth-running double castors
- 5th castor for added resistance to tipping
- Optimized foot space
- Central braking system effective on 4 castors
- Integrated foot keypad panel for seat height adjustment
- Power supply-independent battery box with emergency stop button



Technical specifications

Lifting column

- Drive 3,000 N (IPX4)
- Lifting height 200 mm

Chassis

- L x W (incl. braking system/foot keypad) 650 x 600 mm
- Castors \varnothing 100 mm
- 5th castor \varnothing 65 mm
- Central brake acting on all four castors
- Emergency stop button

Battery unit

- Battery box with 2 batteries (lead-gel), pollution free, maintenance-free, cadmium-free 2 x 12 V, 7.2 Ah
- Universal battery charger: Input: 100 – 240 V
Output: 30 V

Seating systems:

Comfort | Dynamic

- Min. sitting height 550 mm | 600 mm
- Max. sitting height 750 mm | 800 mm
- Seat angle adjustments $-5^{\circ}/+5^{\circ}$ | -12°
- Back angle adjustments $-25^{\circ}/+5^{\circ}$ | -16°

Weight 45 kg

Max. load 150 kg

Subject to technical modifications.

Technical dimensions

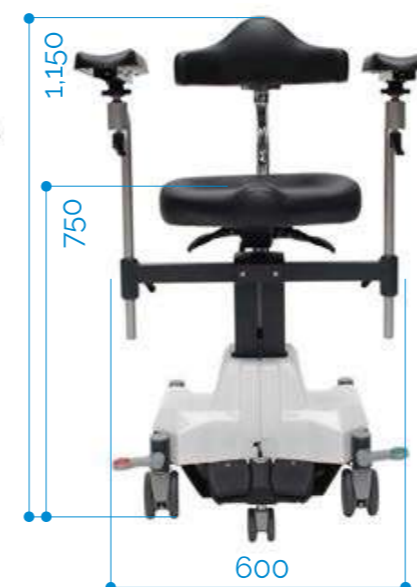
Seating system Comfort

Minimum



Specifications in mm

Maximum



Seating system Dynamic

Minimum



Maximum



surgiLine

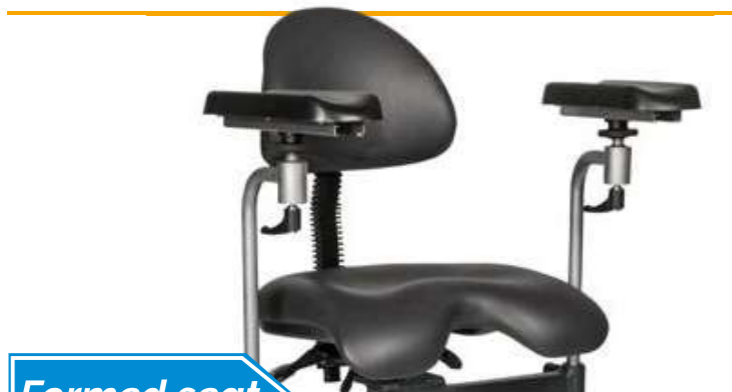


Item No.: 2200 0008 with Formed seat (Illustration)
 Item No.: 2200 0013 with Comfort seat

The quintessential timeless surgeon chair for microsurgery. The *surgiLine* is a tried and tested classic and a reliable partner in the operating room. It has a rugged steel frame yet is easy to maneuver thanks to its high-grade double castors. The seat and backrest are height-adjustable and promote a healthy sitting posture thanks to *surgiLine's* special lumbar support. The armrests can be individually adjusted for each surgeon. Available in two seating system types: Formed seat or Comfort.



Seating systems



Formed seat

Seat angle adjustment



Back angle adjustment



Back height adjustment



Upholstery/color card

Standard color
anthracite
Item No.: 3037 0052



"skai Tundra" Page 102

Formed seat

"skai Pandoria Plus" Page 103



Comfort

Seat angle adjustment



Back angle adjustment



Back height adjustment



Standard color
black
Item No.: 3037 0235



"PeriLine" Page 105

Comfort

PERFORMANCE
LINE

Armrests

- Stable, ergonomically shaped armrests with curved support surface (350 x 120 mm)
- Height-adjustable and equipped with a ball joint for 360-degree rotation
- Designed for personalized adjustment to the surgeon
- Optionally available with one-hand release
- Optionally available with linear guide and one-hand release



Chassis

- Powder-coated tubular steel frame with sanitary, scratch-resistant high-shine plastic cover panels
- 4 high-quality, smooth-running double castors
- Central braking system effective on 4 castors
- Integrated foot keypad panel for seat height adjustment
- Power supply-independent battery box with emergency stop button



Technical specifications

Lifting column

- Drive 3,000 N (IPX4)
- Lifting height 200 mm

Chassis

- L x W (incl. braking system/foot keypad) 640 x 600 mm
- Castors \varnothing 100 mm
- Central brake acting on all four castors
- Emergency stop button

Battery unit

- Battery box with 2 batteries (lead-gel), pollution free, maintenance-free, cadmium-free 2 x 12 V, 7.2 Ah
- Universal battery charger: Input: 100 – 240 V
Output: 30 V

Seating systems:

Formed seat | Comfort

- Min. sitting height 530 mm | 550 mm
- Max. sitting height 730 mm | 750 mm
- Seat angle adjustments $-5^{\circ}/+6^{\circ}$ | $-5^{\circ}/+5^{\circ}$
- Back angle adjustments $-18^{\circ}/+5^{\circ}$ | $-25^{\circ}/+5^{\circ}$

Weight

45 kg

Max. load

150 kg

Subject to technical modifications.

Technical dimensions

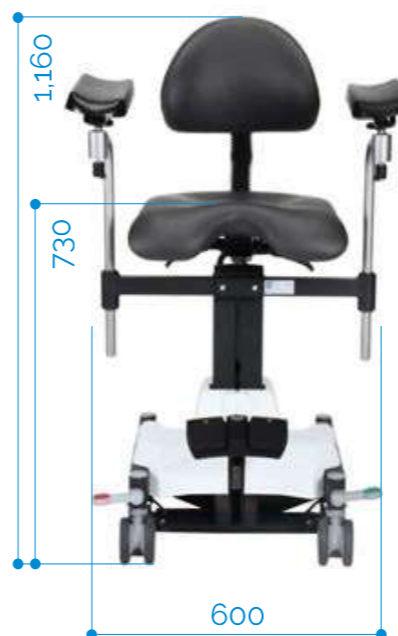
Seating system Formed seat

Minimum



Specifications in mm

Maximum



Seating system Comfort

Minimum



Maximum



Components



surgiTrend
Dynamic seat Item No.: 2200 0010



surgiTrend
Comfort seat Item No.: 2200 0012



surgiLine
Formed seat Item No.: 2200 0008



surgiLine
Comfort seat Item No.: 2200 0013



Backup battery

Item No.: 3047 0000



Armrest pair with linear guide and one-hand release, factory-fitted

Item No.: 33511 006



Armrest pair with one-hand release, factory-fitted

Item No.: 3351 1004



surgiTrend
Footswitch plate
480x715 mm, height 53 mm

Item No.: 3351 1011



surgiLine
Footswitch plate
480x715 mm, height 53 mm

Item No.: 3351 0014



UNIVERSITÄTSKLINIKUM ESSEN (Essen, DE)